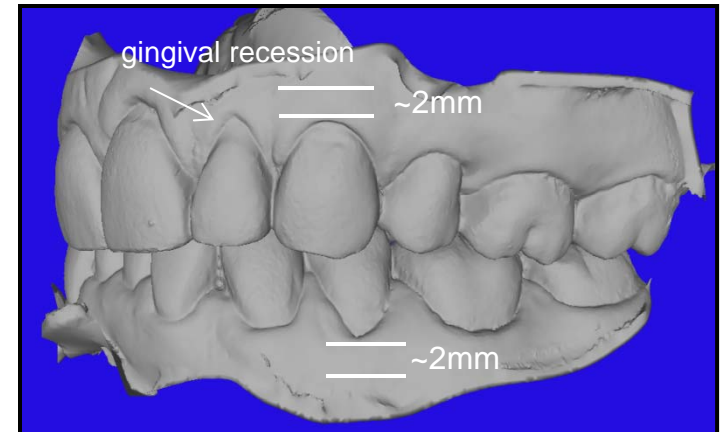


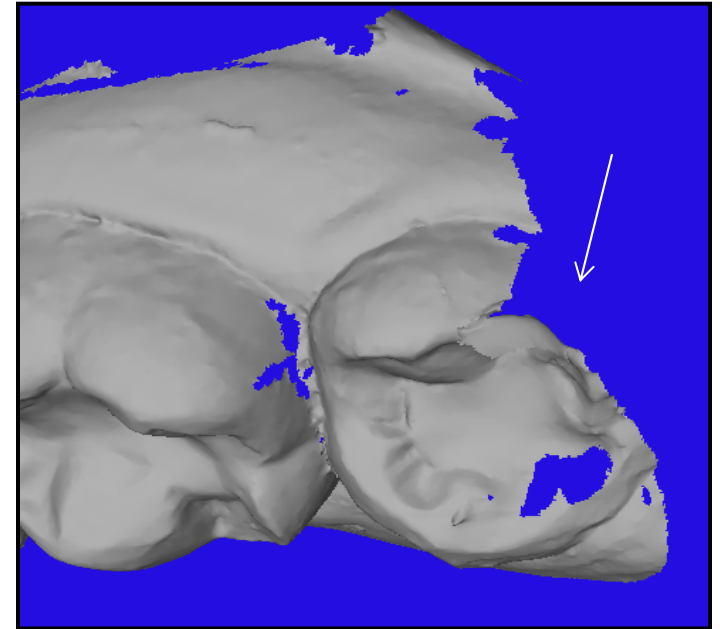
Intra Oral Scanning Protocols

Requirements-

-Full capture of gingival margin at least 2mm below CEJ. This includes areas of gingival recession.



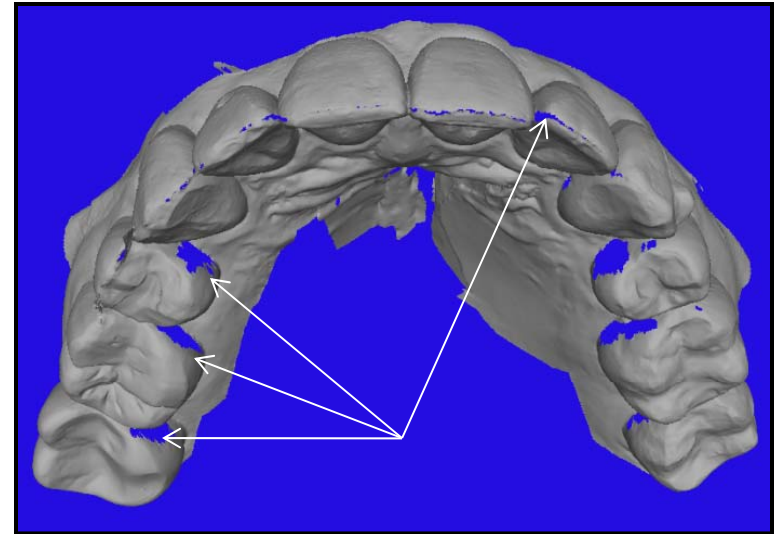
-Full capture of terminal molars including 3rd molars.



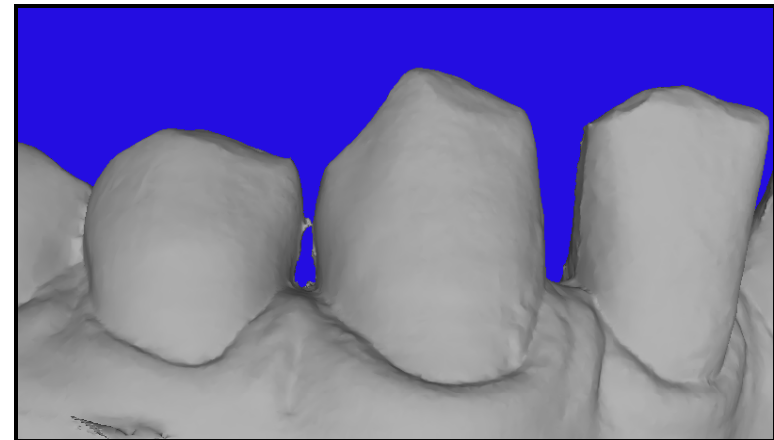
Intra Oral Scanning Protocols

Requirements-

-Full capture of all undercuts, incisal edges, and occlusal surfaces on both the maxillary and mandible.

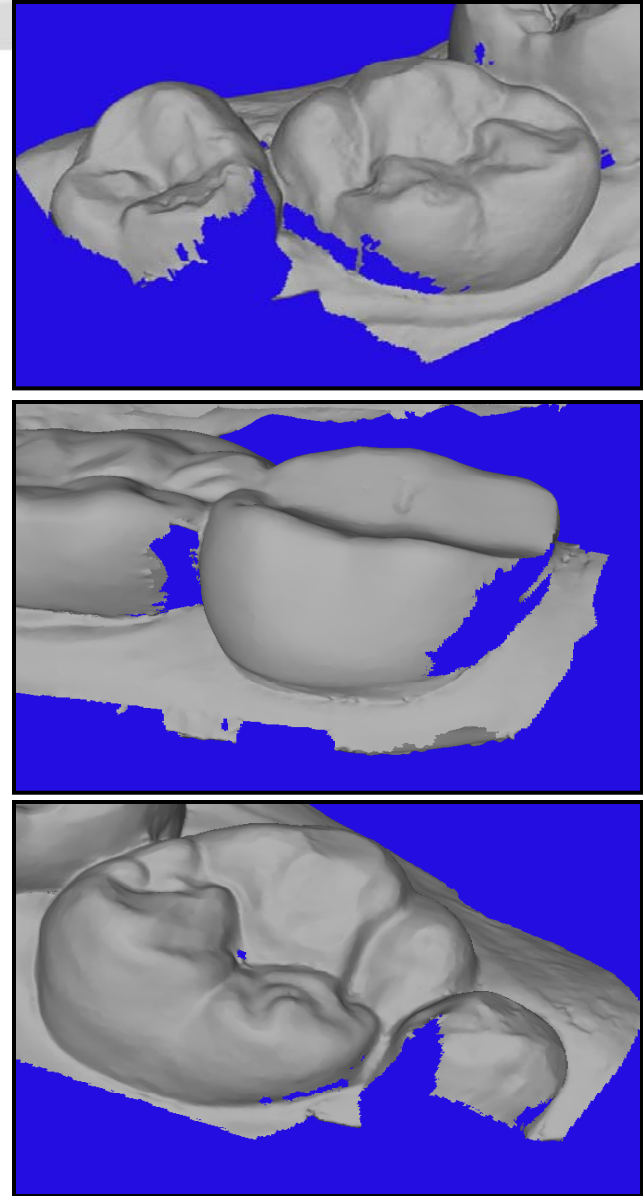


-Full capture of inter-proximal spaces including marginal ridges and contact points.



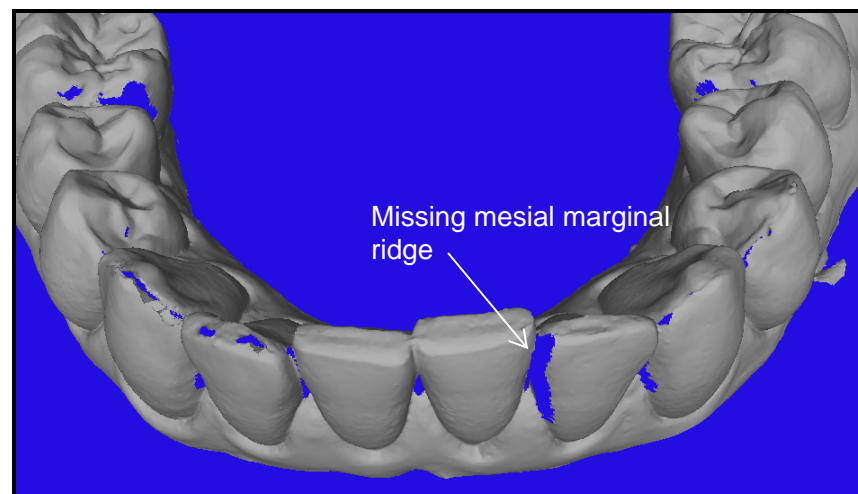
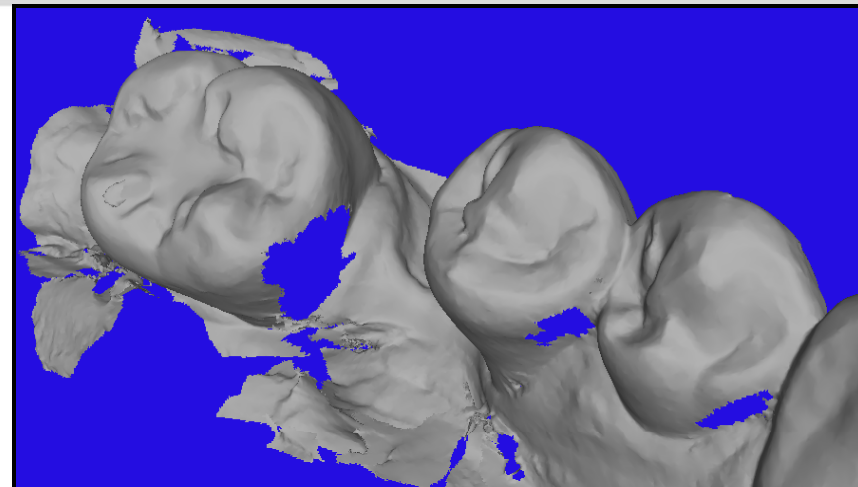
Scanning errors

Incomplete scan- Missing data on terminal molars will require distal trimming. If trimming is not an option due to treatment goals, the case could be rejected.



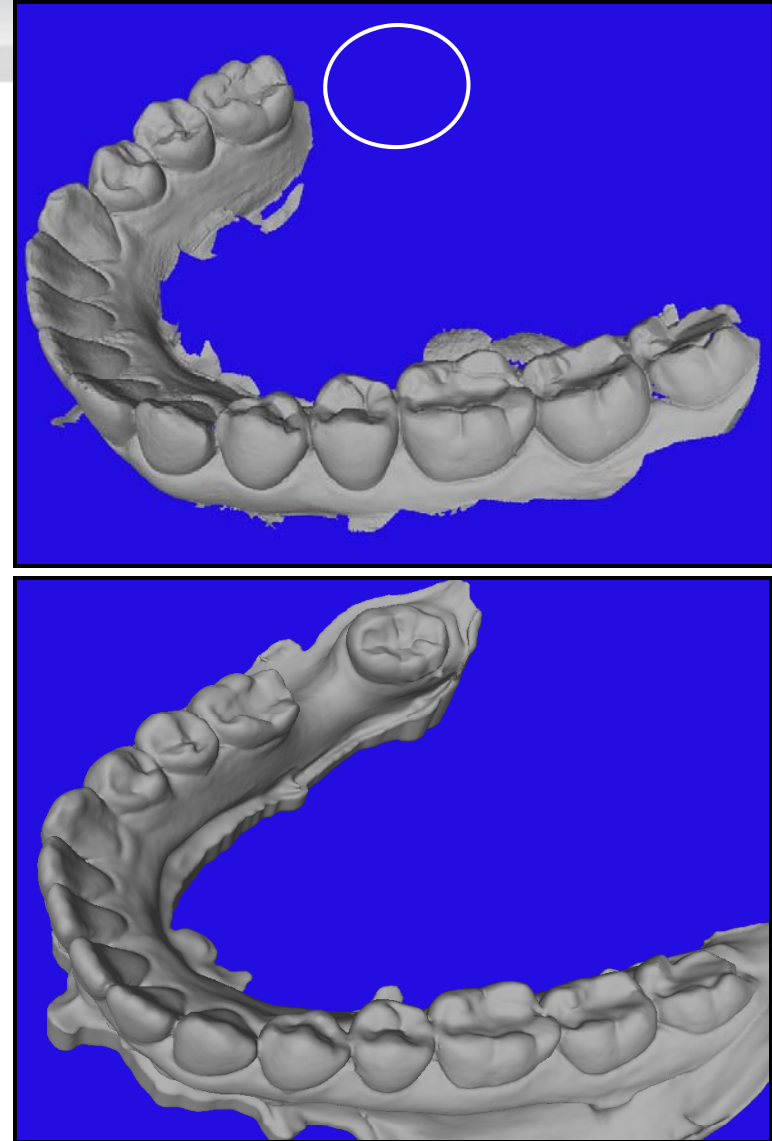
Scanning errors

Incomplete scan- Several areas of missing data will require manual detailing of each area. Overall fit and function of aligners are compromised by poor scans.



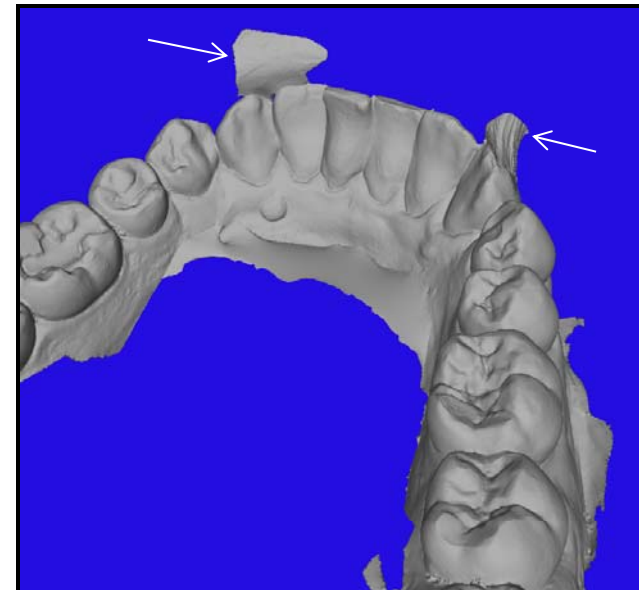
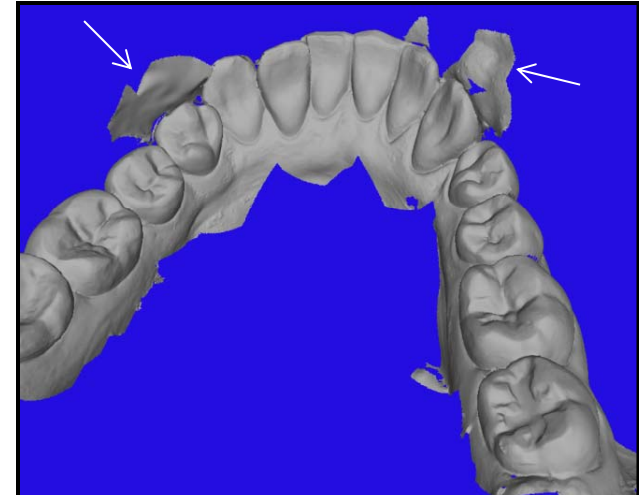
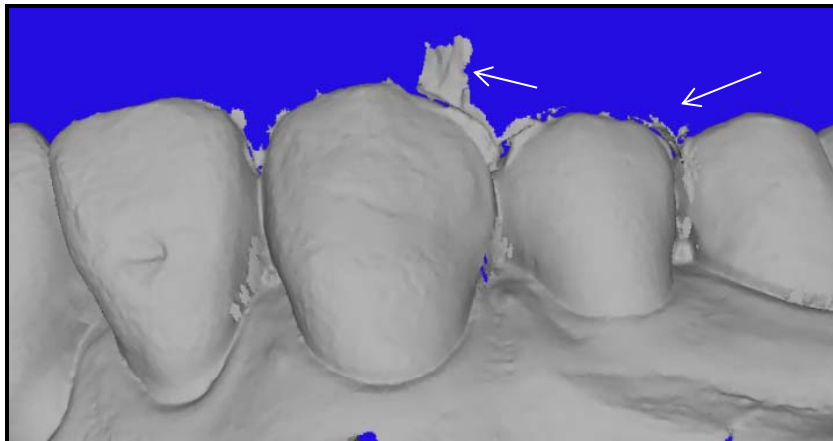
Scanning errors

Incomplete scan- Terminal molar distal to posterior diastema not captured in IO scan. Case would be rejected.



Scanning errors

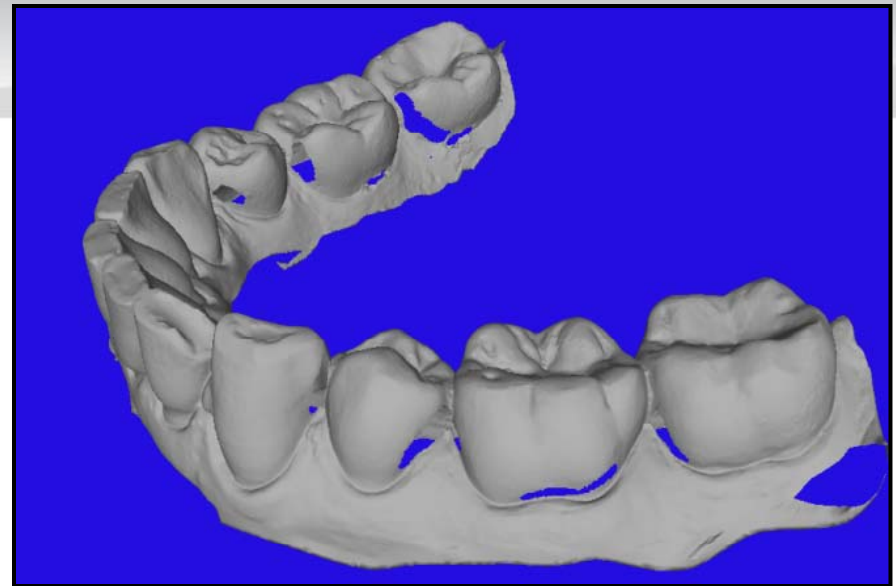
Excessive material- Too much “excess material “ may result in rejection of scans. Although most of the material can be removed manually it could result in rejection due to the inability of the technician to properly contour and detail the teeth.



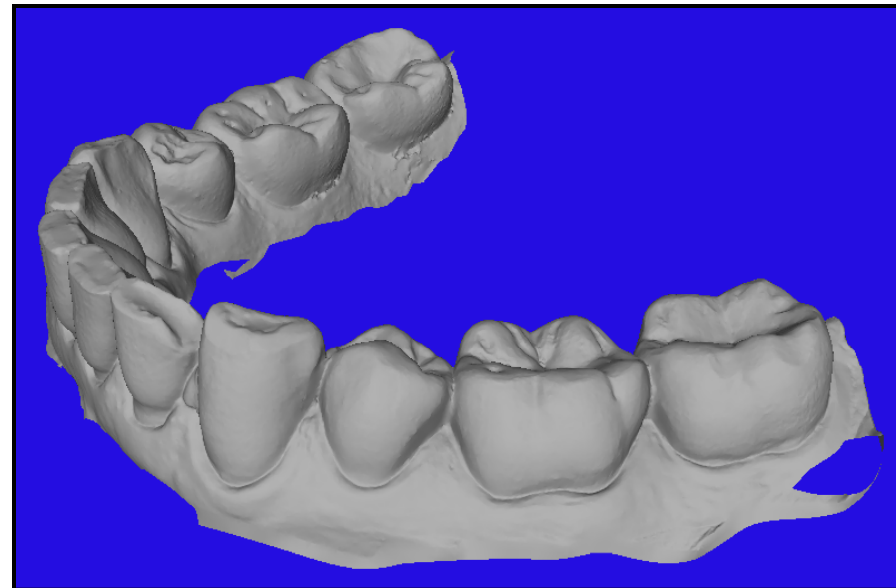
Scanning errors

Missing data- The loss of data at undercut areas due to tooth shape.

Incomplete scan

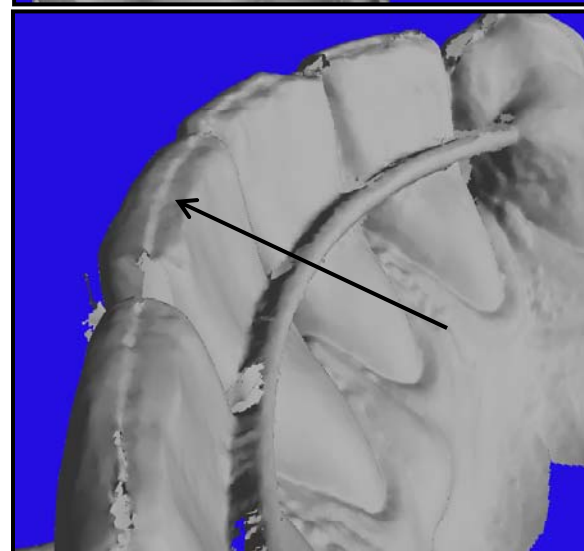
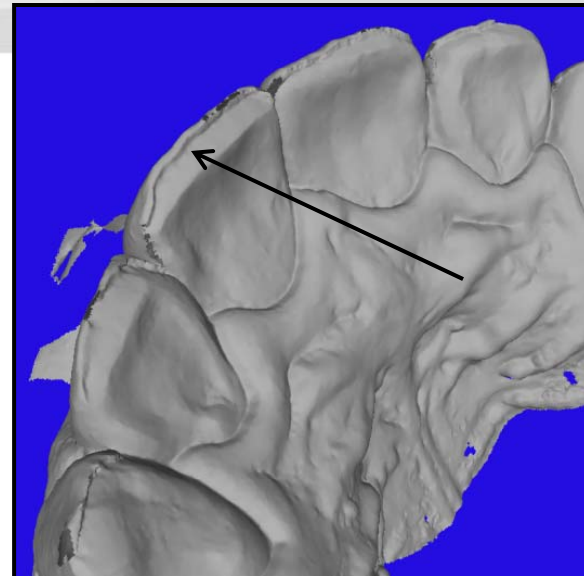


Complete scan



Scanning errors

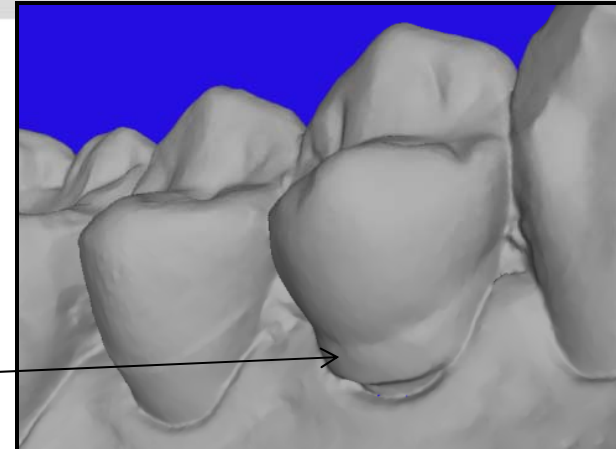
Double incisal edges— Caused by scanning directly at tooth surfaces rather than at a 45° angle. These types of scans will be rejected.



Scanning errors

Crowns and bridges- It's important to fully capture crowns, bridges, implants, attachments. If not done properly, fit could become an issue.

Cervical metal collar
on bicuspid
crown



Example- A scan of a posterior 4 unit bridge. Missing data was filled below the buccal margins by software due to missing data. Although, bridges are not moved during treatment this case could be rejected due to unusual anatomy.

