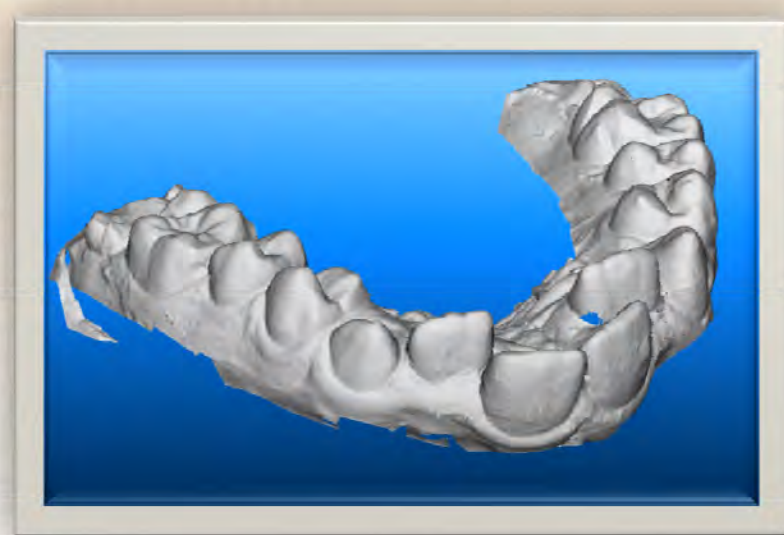
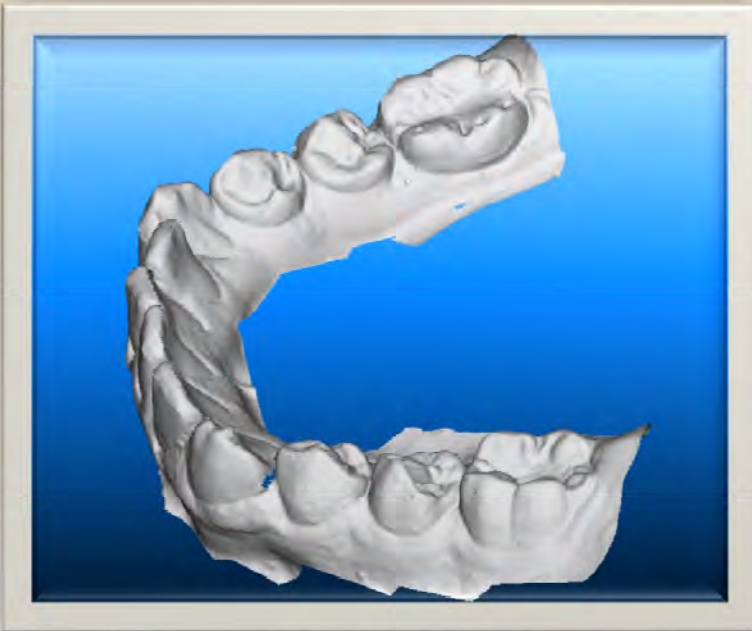
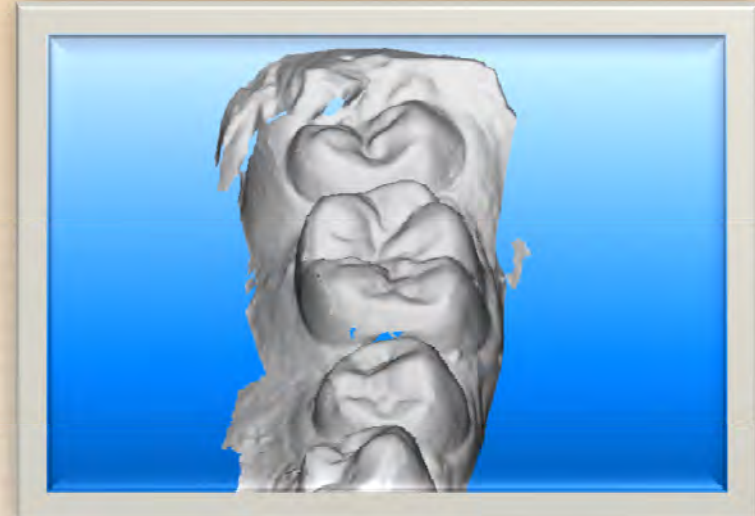
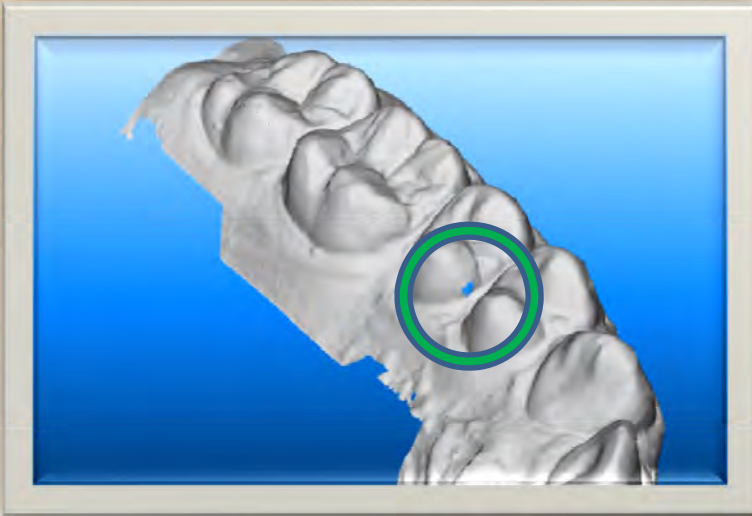
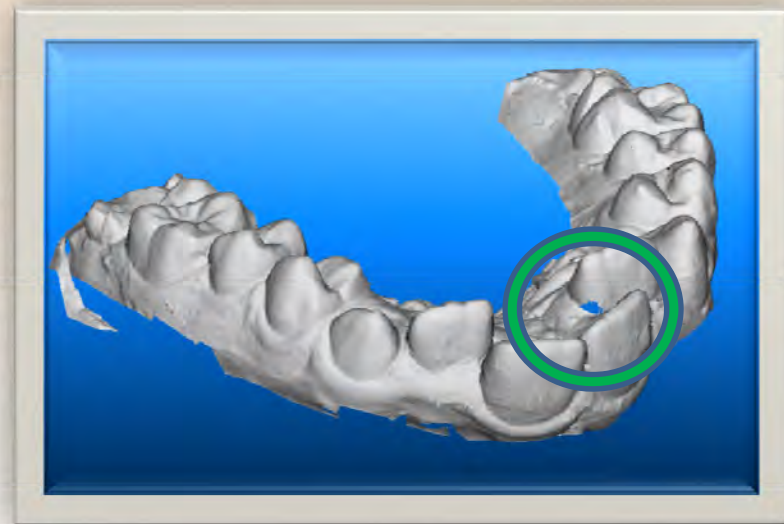
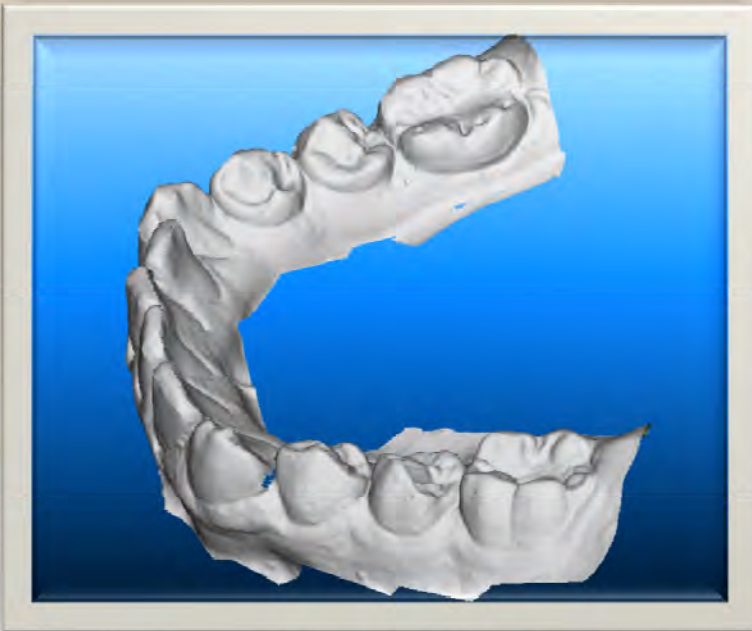
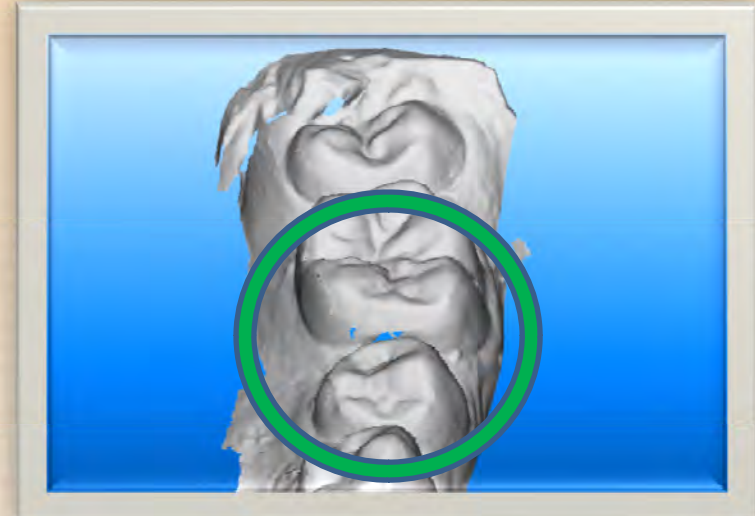
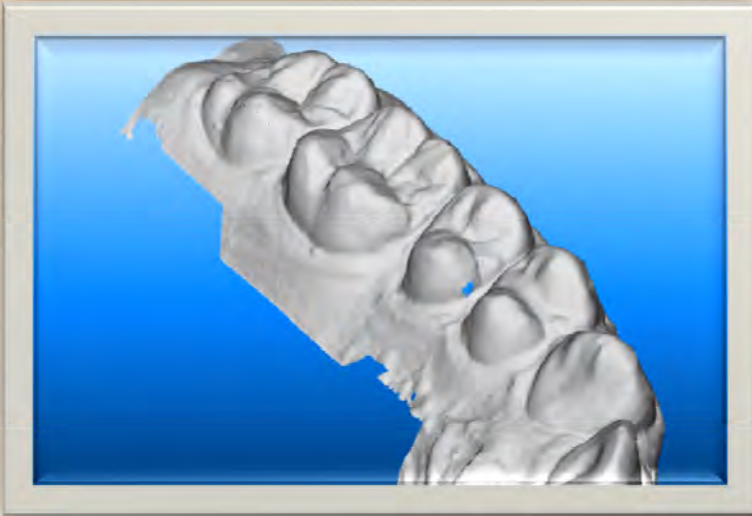


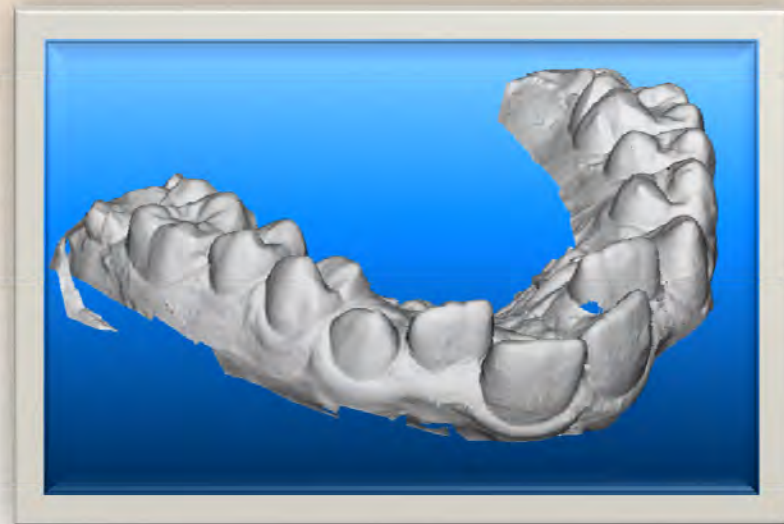
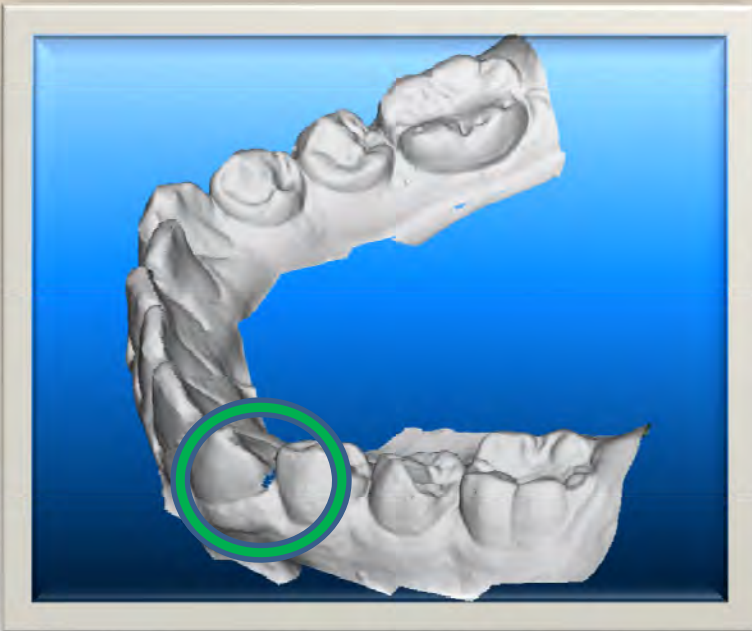
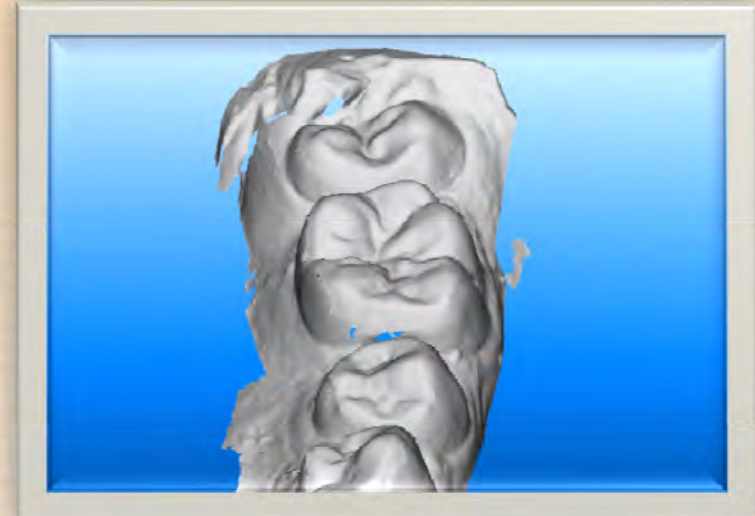
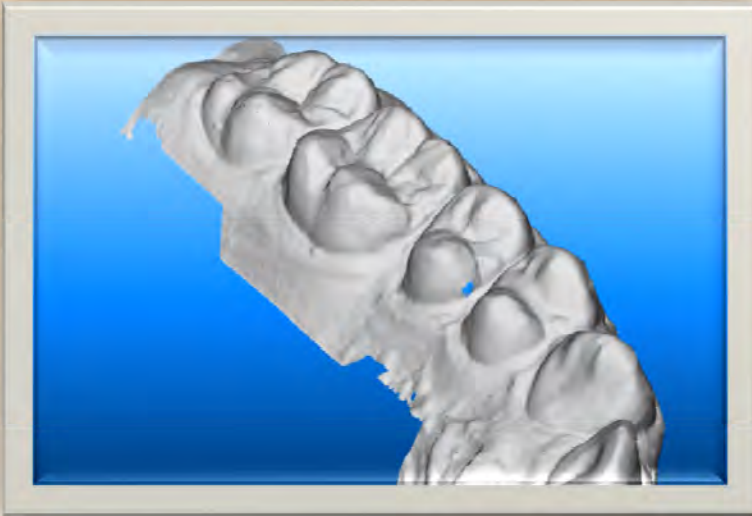
## “Blue Holes” That Do Not Require Additional Scans



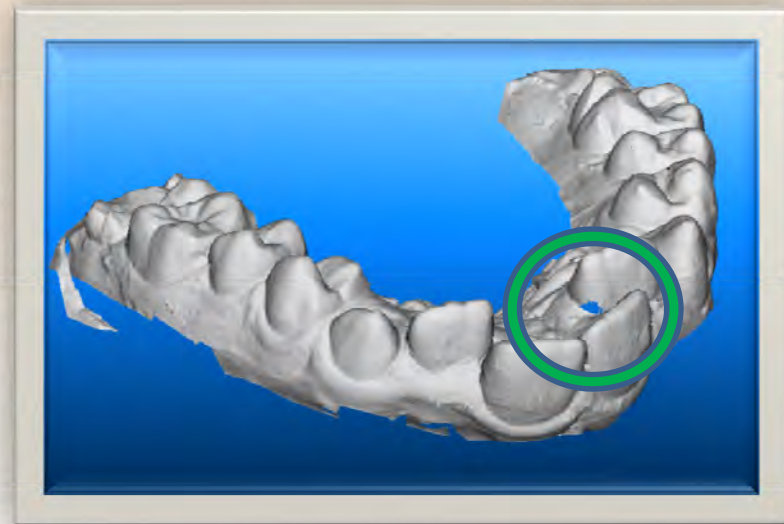
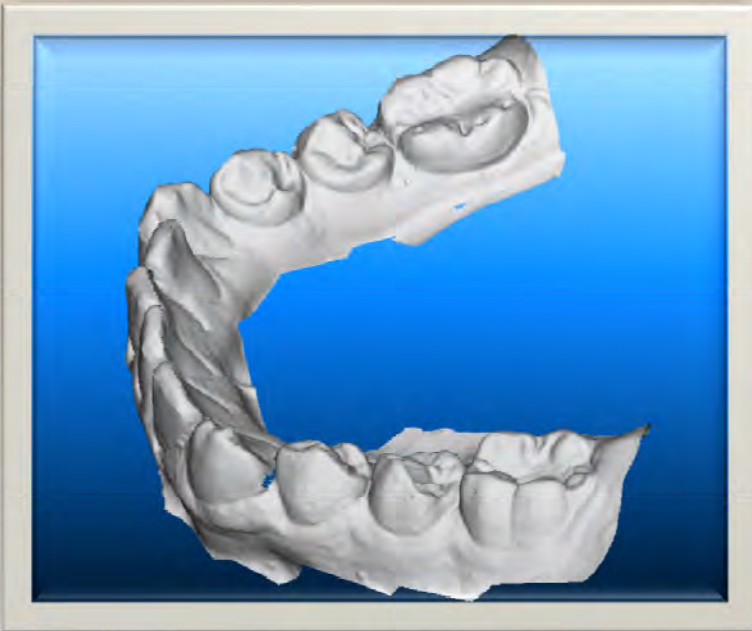
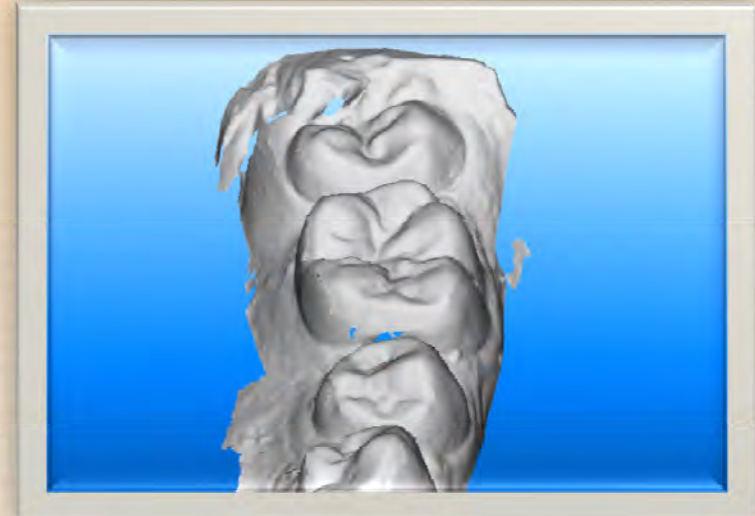
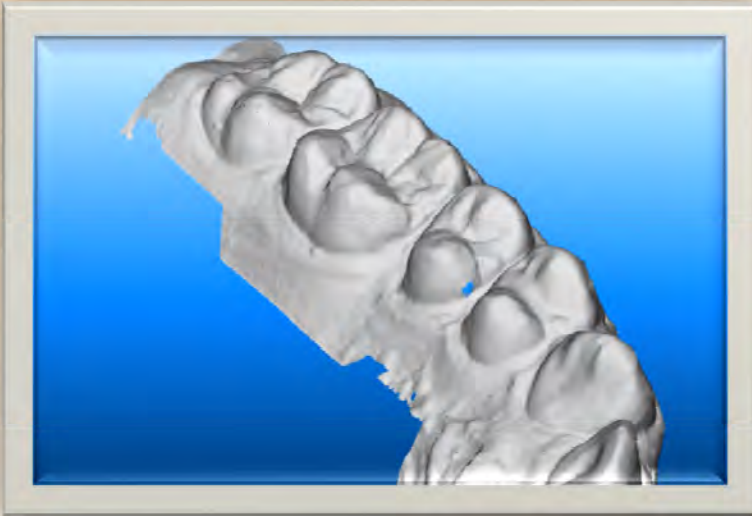
## “Blue Holes” That Do Not Require Additional Scans



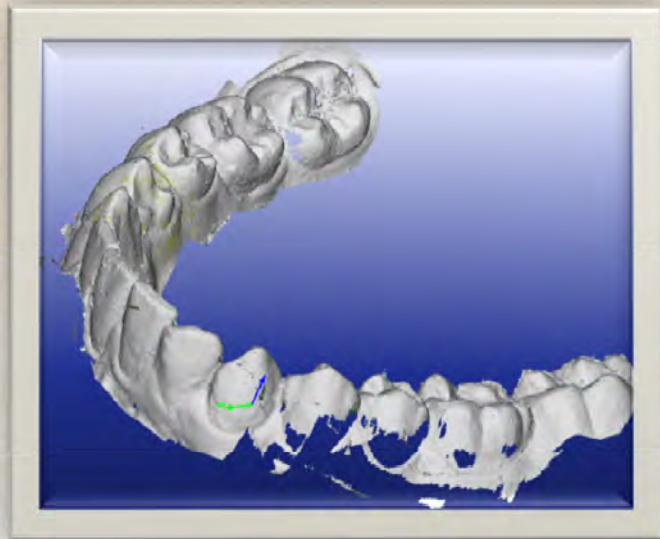
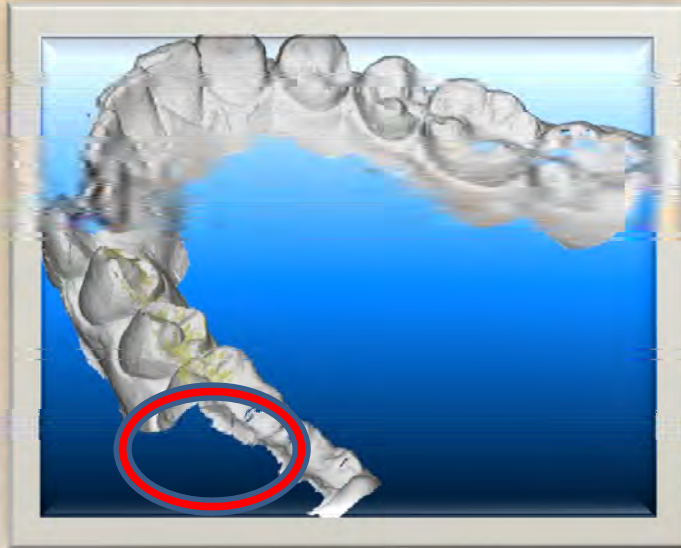
## “Blue Holes” That Do Not Require Additional Scans



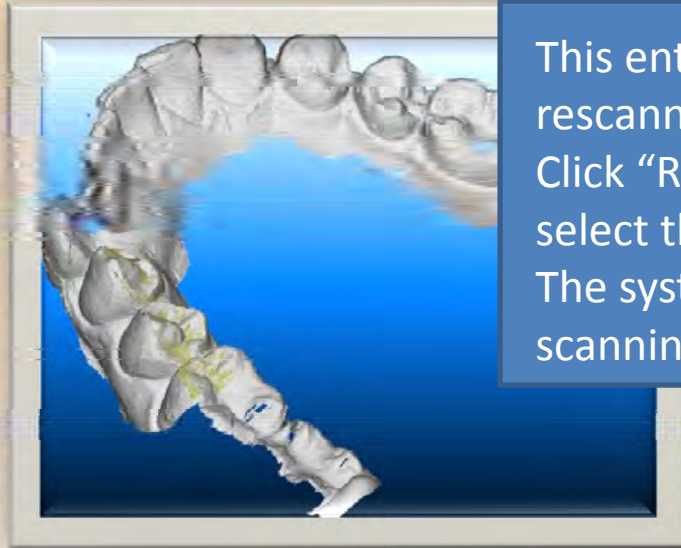
## “Blue Holes” That Do Not Require Additional Scans



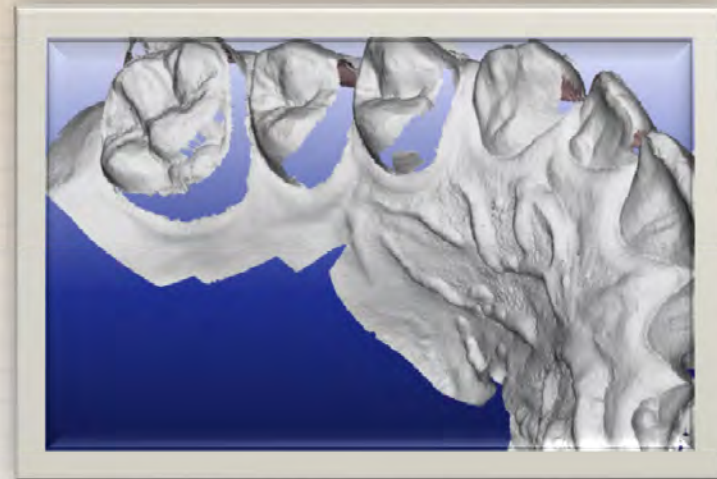
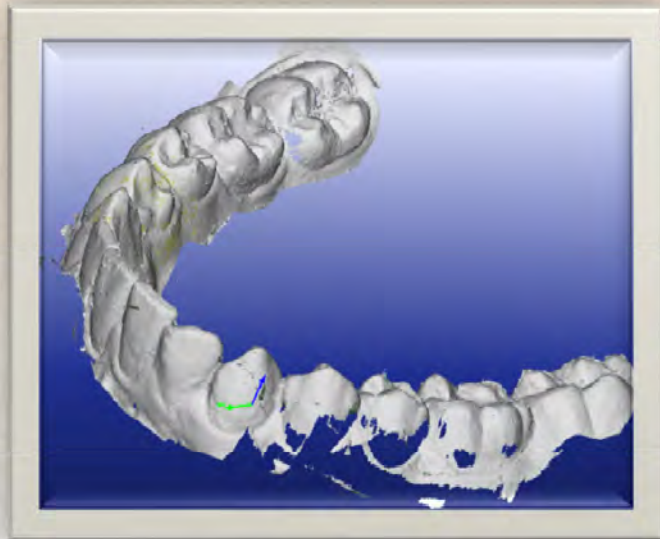
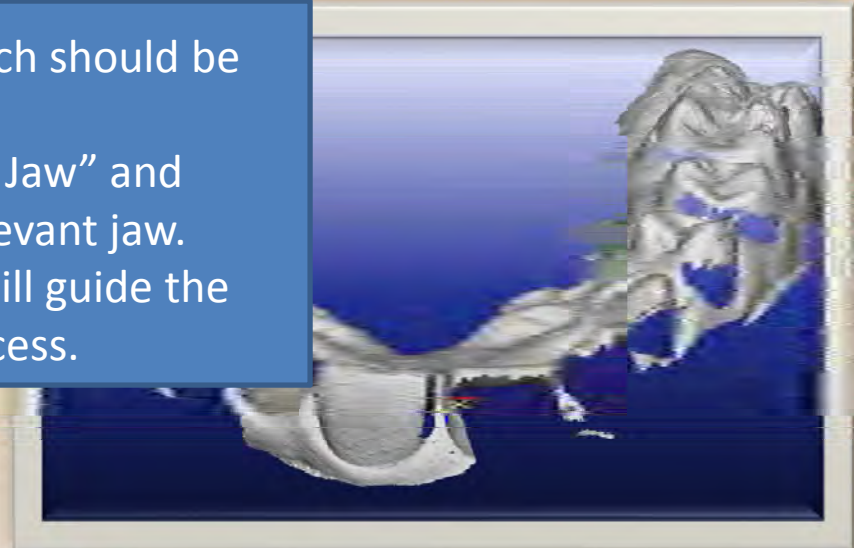
## “Blue Holes” That Do Require Additional Scans



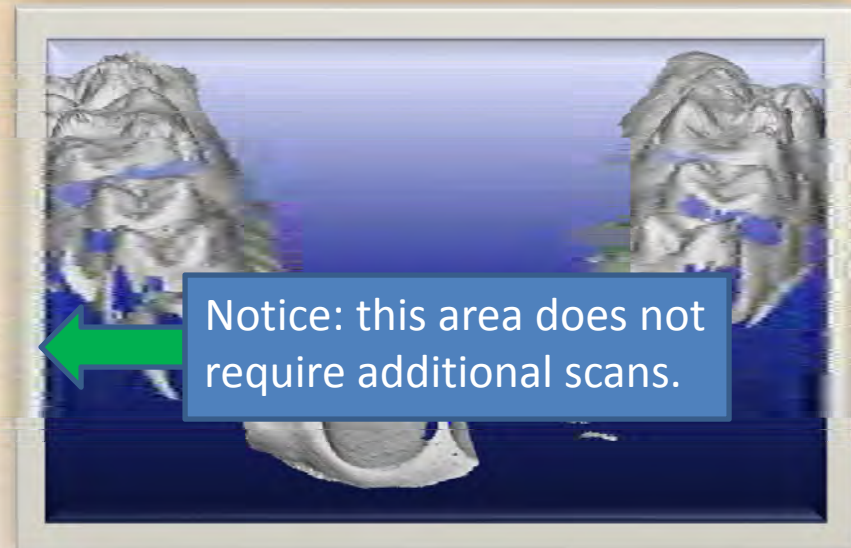
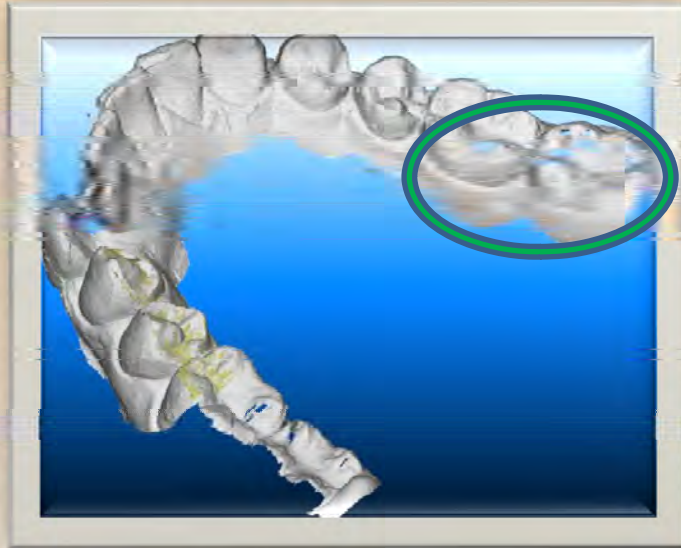
## “Blue Holes” That Do Require Additional Scans



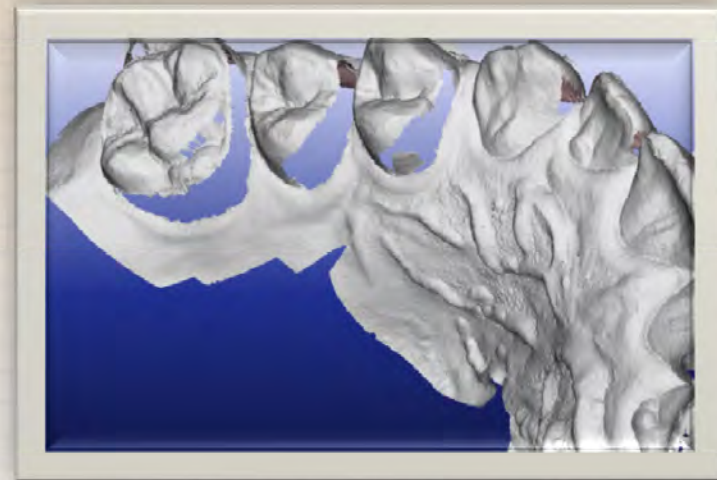
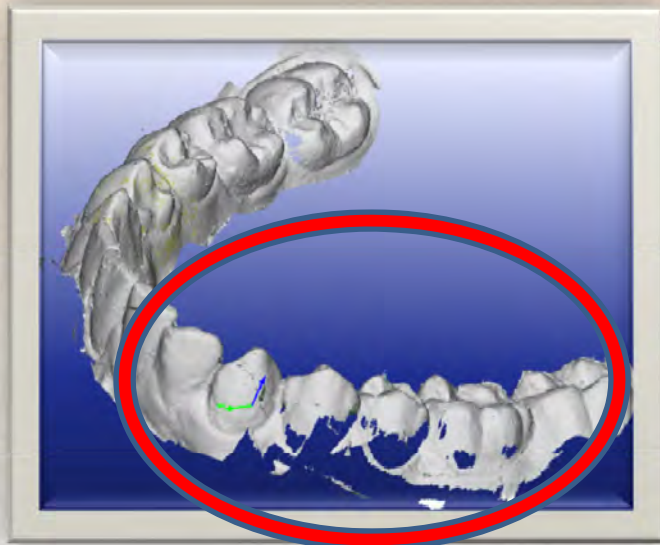
This entire arch should be rescanned.  
Click “Rescan Jaw” and  
select the relevant jaw.  
The system will guide the  
scanning process.



## “Blue Holes” That Do Require Additional Scans



Notice: this area does not require additional scans.



## “Blue Holes” That Do Require Additional Scans

