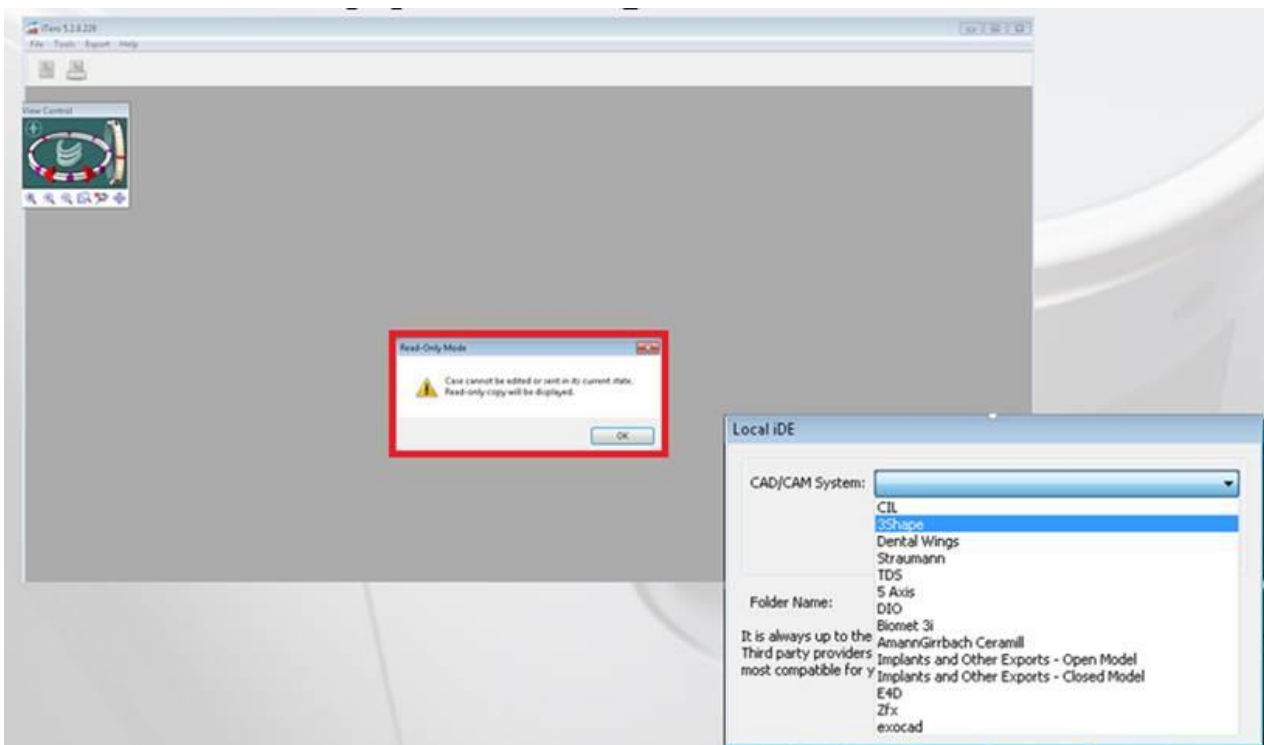


Instructions for Exporting a STL after Completing the Lab Process

If you already approved the case and just forgot to export the file, you have the option of exporting the STL file without interrupting the milling process or calling customer support. Just go to www.myaligntech.com and open the file again. **Export (iTero4.1 or higher)** option will be available for you to use. This tool will allow you to export the case in different Cad Cam formats.

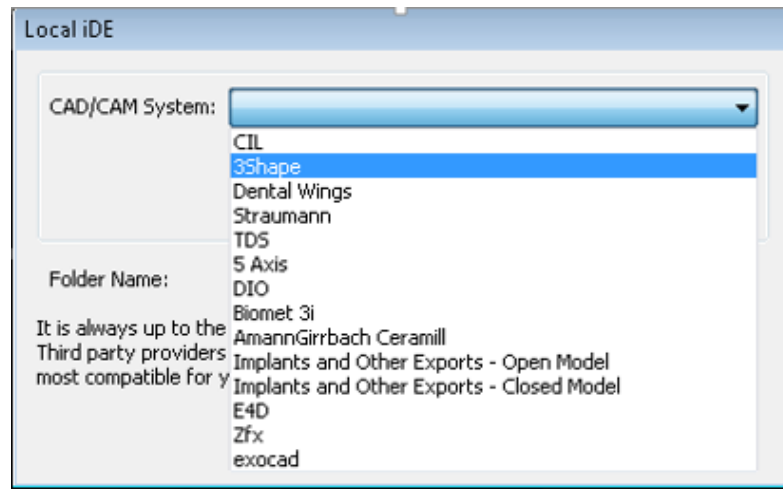
Order Details ID	Item	Quantity	Ship To	Bill To	Due Date	Shipping Date	Delivery Date	Status
5485271	Reference Model Scan	1.00	Costa Rica Lab	Costa Rica Lab	2012/08/09	2012/07/20		Completed
5485273	Reference Model Case	0.00	Align Technology C.R. Lab		2012/08/09			Completed
9416282	3rd Party iDE	1.00	Align Technology C.R. Lab	Align Technology C.R. Lab		2014/11/14	2014/11/14	

Case will be opened in a read only mode. No modifications to the order can be done. You are going to have access to create the STL files only. A Cad Cam system list will be displayed and you will have access to choose your preferred CAD CAM option and create the STL. In addition, you will have the possibility to rename the file using patient's name.

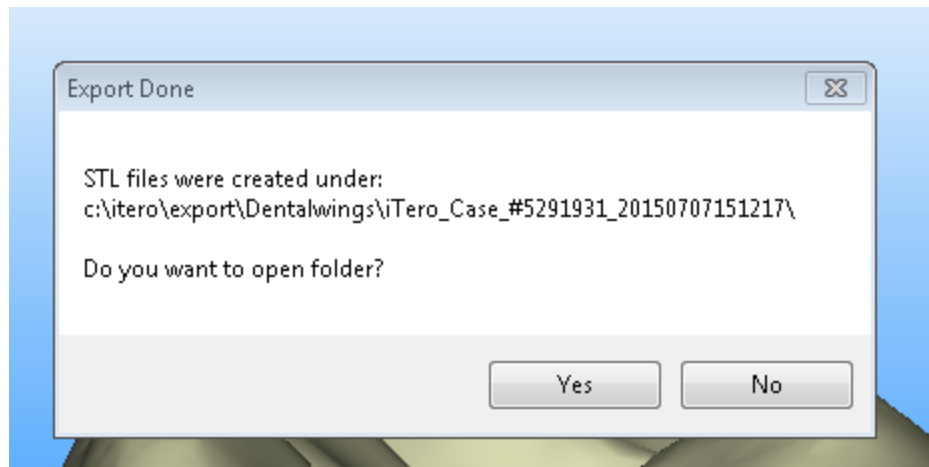


If you do not know which option you would need to choose, please keep in mind that third party providers can provide guidance on the export type that would be most compatible for your intended use.

CAD CAM System List:



As soon as you finish, a message will show the exactly location of the STL file and it will allow you to open it. All your STL files will be saved in your c drive (**Computer-C Drive- iTero- Export Folder**).



If you have questions, please do not hesitate to contact Lab support at **800 577 8767** option 5.